

## Instruction Sheet

Follow these steps to install an Ethernet port and cable in the fryer.

1. Disconnect power and/or gas from the fryer.
2. Remove the fryer from the hood to gain access to the rear of the fryer.
3. Remove the filter pan (see Figure 1).
4. Loosen the four (4) screws on the lower rear back and remove the lower back (see Figure 2). It may be necessary to remove basketlifts first if applicable.
5. Attach the ethernet cable to the rear of the bulkhead as shown (see Figure 3).
6. Attach the bracket to the rear frame as shown (see Figure 4). **DO NOT attach the the rear oil manifold.**
7. Starting from the rear route the cable under the flexlines in the rear, around the left side, towards the front of the fryer, to the far-left control box (see Figures 5 & 6).

**Ensure the cable is not routed over oil lines where heat could melt the cable or any place it could get pinched or damaged by the movement of the filter pan.**



Figure 3

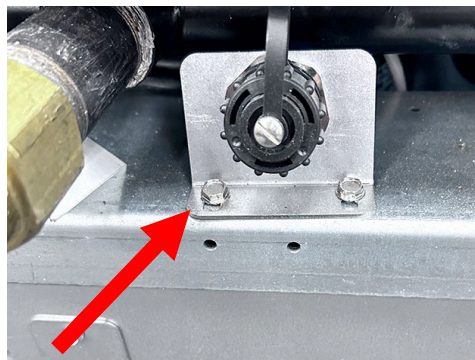


Figure 4 viewed from rear of fryer



Figure 1

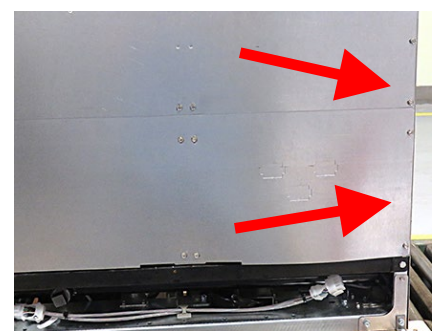


Figure 2

**Subject: 8263838 FQLink Ethernet Installation Instructions**

**Models affected: FilterQuick 4000, BIGLA30-T and BIELA14-T (LOV Touch Screen) Fryers**

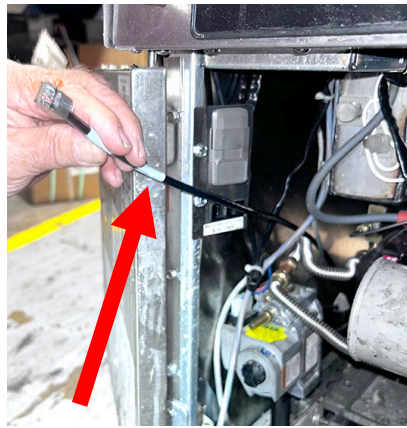
**10.18.2024**

In This Kit		
Part #	Description	Qty
8076300	CABLE, FQLINK ETHERNET	1
8140015	TY WRAP	10
8090361	SCRW, DRLL #8-1/2 HX HD ZP	5
1088356	ETHERNET ASSY, REAR PLATFORM	1
8198054ET	INSTRUCTIONS	1

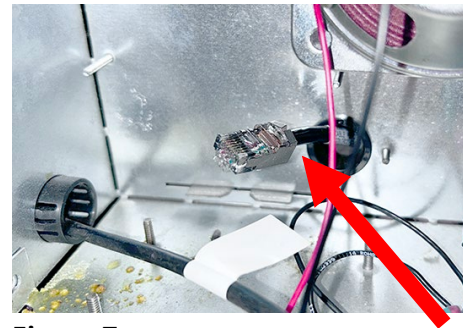


Figure 5

8. Remove the two (2) screws attaching the controller to the bezel. Replace the controller following FQLink installation instructions, if necessary.
9. Insert the cable through the rear left grommet, into the far-left control box (see Figure 7).
10. Attach the cable to the ethernet connection on the rear of the controller (see Figure 8).
11. Reconnect the controller to the bezel.
12. Reverse steps 1-4 to return the fryer to operation.



**Figure 6**



**Figure 7**



**Figure 8**